

SP700

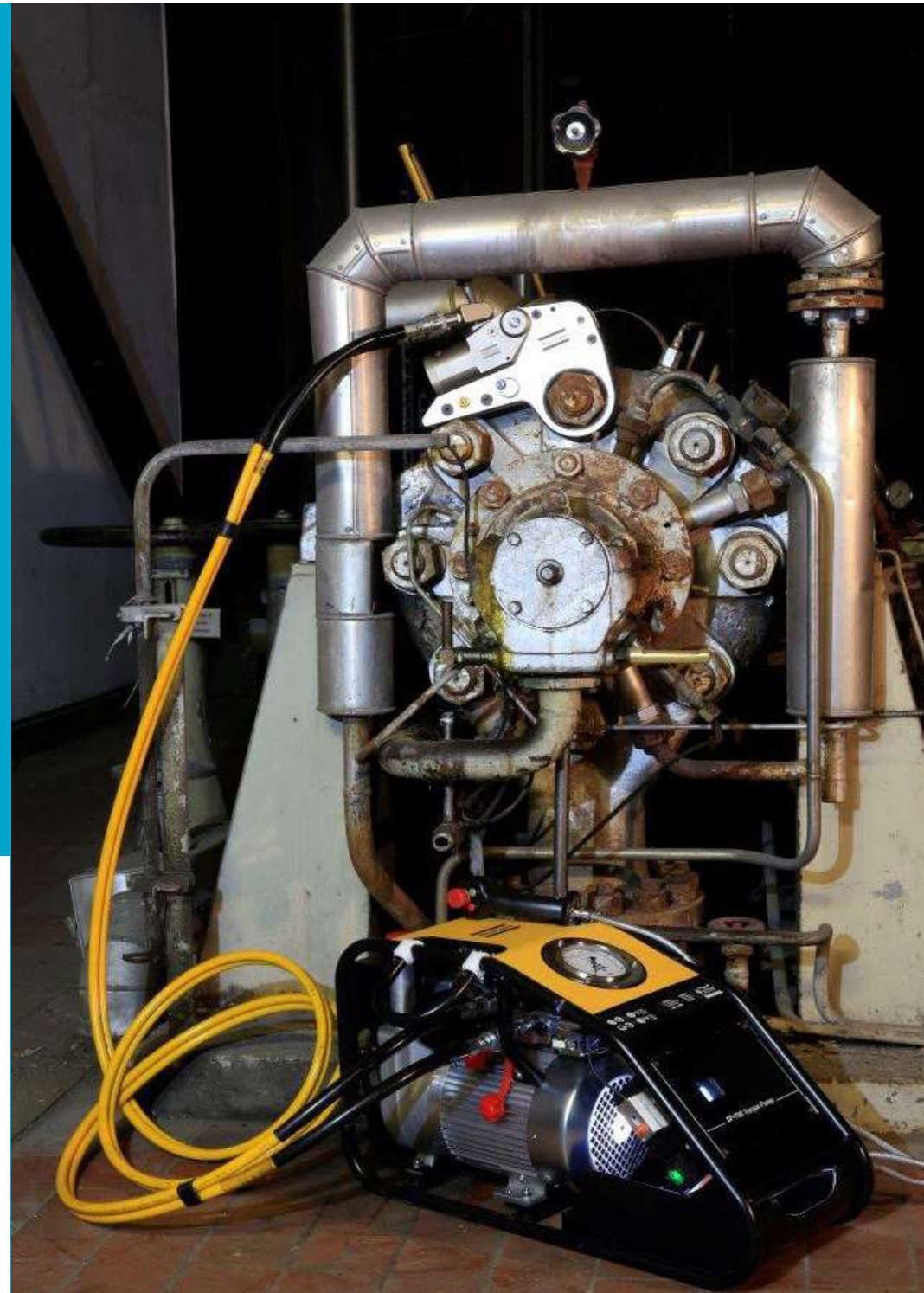
A premium powerpack for torque tools



With smart tools becoming more important for all sectors, you need a premium powerpack to carry out the work

The new SP700 Hydraulic Torque Powerpack is equipped with a range of features to increase productivity in your torque processes. Integrating this powerpack into your operations, you can increase tightening speeds by upto 30%.

Investing in great tools can take you a long way. Choosing an intelligent hydraulic powerpack will take you even further. A quicker process and a safer operation makes the SP-700 a smarter choice. Not to mention the worry free operation and ergonomic benefits.



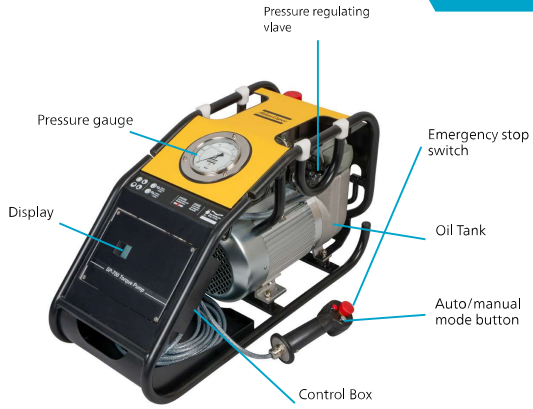
Premium Powerpack



SP700

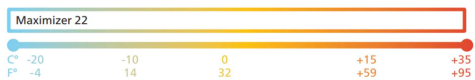
- Three stage
- Effective oil cooling system
- High strength steel frame
- Oil filter for enhanced life
- Class 1 gauge (+/- 1% full scale)
- Auto shutoff after 1 minute idling
- High temperature protection

30%
Increase in
tightening speed
meaning less
process time

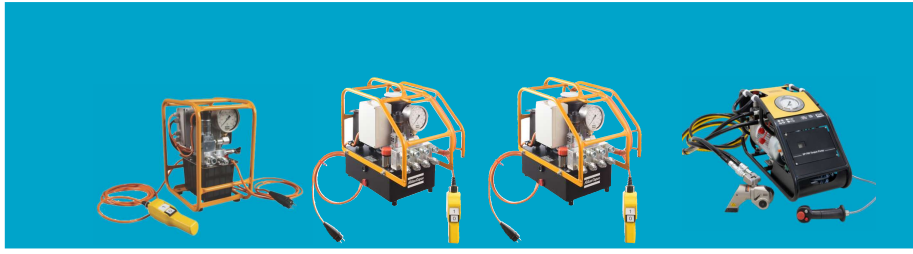


Model	Current Supply			Oil flow 120 bar l/m	Oil flow max pressure l/m	Usable oil capacity		Max Pressure bar	Weight		Height		Width		Length		Ordering No.
	Voltage	Frequency	Current			l	Gal		kg	Lb	mm	in	mm	in	mm	in	
SP-700-230	230 V	50 Hz	10 A	6.89	1.10	1.7	0.45	700	33	72.7	370	14.6	278	10.9	680	26.8	8434 2040 47
SP-700-115	115 V	60 Hz	22 A	6.33	0.86	1.7	0.45	700	33	72.7	370	14.6	278	10.9	680	26.8	8434 2040 48

Accessories	Order number
4 port manifold kit	8434 2040 50
Maximizer 22 Oil	8434 2040 49



Electric torque wrench powerpacks



Panther 025 Panther 55 Panther 150 SP-700

	1 Port	4 Ports	4 Ports	4 Ports	1 Port	1 Port
Twin	8434 2040 33 (115V) 8434 2059 54 (230V)	8434 2040 35 (115V) 8434 2040 37 (230V)	8434 2040 39 (115V)	8434 2040 41 (230V)	8434 2040 48 (115V)	8434 2040 47 (230V) 50Hz 8434 2040 48 (230V) 60Hz

Ordering Numbers	1 Port	1 Port	1 Port	1 Port	1 Port	1 Port
Co-Ax	8434 2430 29 (115V) 8434 2430 30 (230V)	8434 2420 88 (230V) 8434 2420 90 (115V)	8434 2420 94 (115V)	8434 2420 92 (230V)	8434 2420 99 (115V) 60Hz	8434 2420 98 (230V) 50Hz 8434 2421 00 (230V) 60Hz
		4 Ports 8434 2420 89 (230V) 8434 2420 91 (115V)	4 Ports 8434 2420 91 (115V)	4 Ports 8434 2420 89 (230V)		

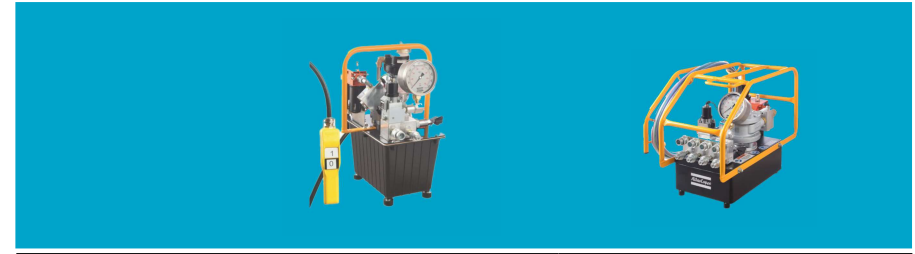
Dimensions (LxWxH)	inches	14.1 x 12.2 x 17.3	17.3 x 12.6 x 16.5	17.3 x 13 x 17.3	17.3 x 13 x 17.3	26.8 x 10.9 x 14.6	26.8 x 10.9 x 14.6
	mm	360 x 310 x 440	460 x 320 x 420	440 x 330 x 440	440 x 330 x 440	680 x 278 x 370	680 x 278 x 370
Weight (w/o / with oil)	lb	42,6 / 46,6	61,6 / 70,4	64,9 / 73,7	64,9 / 73,7	69 / 72,7	69 / 72,7
	kg	19,4 / 21,1	28 / 32	29,5 / 33,5	29,5 / 33,5	35,6 / 37,5	35,6 / 37,5
Oil Capacity	Gallons	0,45	1,05	1,05	1,05	0,45	0,45
	Liters	1,7	4,0	4,0	4,0	1,7	1,7
Intercooler System		No	Yes	Yes	Yes	Yes	Yes
Auto Cycle		No	No	No	No	Yes	Yes
Oil Flow@ 1250psi/86bar	cu.in	195 cu. in./min	391 cu. in./min	463 cu. in./min	517,6 cu. in./min		
	l/min	3.2 l/min	6.4 l/min	7.6 l/min	8.5 l/min		
Oil Flow@ 1740psi/120bar					386 cu.in./min	420 cu.in./min	
					6.33 l/min	6.89 l/min	
Oil Flow@ 3600psi/250bar		54 cu. in./min	110 cu. in./min	183 cu. in./min	207.0 cu. in./min		
		0.9 l/min	1.8 l/min	3.0 l/min	4.4 l/min		

Recommended Tools	RT0.5	RT1/TF01	RT3/TF03	RT5/TF05	RT8/TF08	RT10/TF10	RT20	RT25	RT50	TFX02	TFX04	TFX08	TFX14	TFX18	TFX30
	•	•													
	•	•													
	•	•	•												
	•	•	•	•											
	•	•	•	•	•										
	•	•	•	•	•	•									
	•	•	•	•	•	•	•								
	•	•	•	•	•	•	•	•							
	•	•	•	•	•	•	•	•	•						
	•	•	•	•	•	•	•	•	•	•					
	•	•	•	•	•	•	•	•	•	•	•				
	•	•	•	•	•	•	•	•	•	•	•	•			
	•	•	•	•	•	•	•	•	•	•	•	•	•		
	•	•	•	•	•	•	•	•	•	•	•	•	•	•	
	•	•	•	•	•	•	•	•	•	•	•	•	•	•	•

* 4-port manifold is available as an optional accessory. See the powerpack accessory page for order.

91 Hoses and oil not included with the powerpack. Be sure to order corresponding amount of oil for your powerpack and select hose length for your application.

Air torque wrench powerpacks



Panther A110 Panther A380

	Twin	Full Frame 8434 2040 17	4 Ports 8434 2420 22 (ATEX) 8434 2040 23
Ordering Numbers			1 Port 8434 2420 96 4 Ports 8434 2420 97

Co-Ax	On Request	On Request	
Dimensions (Lx-WxH)	inches	15.7 x 13 x 18.5	19.6 x 10.6 x 15.7
	mm	400 x 330 x 470	500 x 270 x 400
Weight (w/o / with oil)	lb	47.3 / 55.2	60.9 / 68.8
	kg	21.5 / 25.1	27.7 / 31.3
Oil Capacity	Gallons	0.95	0.95
	Liters	3.6	3.6
Oil Flow@ 675bar	cu.in	275 cu.in./min	456.75 cu. in./min
	l/min	4.5 l/min	7.5 l/min
Oil Flow@ 75-220bar		67 cu in./min	152 cu. in./min
		1.1 l/min	2.5 l/min
		24 cu. in./min	54.8 cu.in./min
Oil Flow@ Up to 700bar		0.4 l/min	0.9 l/min

Recommended Tools	RT0.5	RT1/TF01	RT3/TF03	RT5/TF05	RT8/TF08	RT10/TF10	RT20/TF20	RT25/TF25	RT50/TF50	TFX02	TFX04	TFX08	TFX14	TFX18	TFX30
	•	•													
	•	•													
	•	•	•												
	•	•	•	•											
	•	•	•	•	•										
	•	•	•	•	•	•									
	•	•	•	•	•	•	•								
	•	•	•	•	•	•	•	•							
	•	•	•	•	•	•	•	•	•						
	•	•	•	•	•	•	•	•	•	•					
	•	•	•	•	•	•	•	•	•	•	•				
	•	•	•	•	•	•	•	•	•	•	•	•			
	•	•	•	•	•	•	•	•	•	•	•	•	•		
	•	•	•	•	•	•	•	•	•	•	•	•	•	•	
	•	•	•	•	•	•	•	•	•	•	•	•	•	•	•

* 4-port manifold is available as an optional accessory. See the powerpack accessory page for order.

Maintenance kits are available for every powerpack model. Consult your local Atlas Copco bolting representative

Accessories for hydraulic torque wrench powerpacks



Twin-line hoses

Model	Length (M)	Length ft)	Ordering No.
90172	4,5M	15 ft	8434 2050 08
090172-7	7M	22,9 ft	8434 2123 95
090172-10	10M	32 ft	8434 2123 74
090172-15	15M	49,2 ft	8434 2050 10
090172-20	20M	65,6 ft	8434 2123 83
090172-30	30M	98,4 ft	8434 2123 86
90172	4,5M	15 ft	8434 2050 09



Co-Axial hoses & accessories

Model	Length (M)	Length ft)	Ordering No.
Co-Axial Hose	4,5M	15 ft	8434242080
Co-Axial Hose	10M	32 ft	8434242151
Co-Ax Accessory	Co-Axial 90Deg Elbow		4222905306



Hydraulic oil

Model	Description	Ordering No.
Tellus 46	5L / 1,32G Container	8434204045
Maximizer 15	5L / 1,32G Container	8434204051
Maximizer 22	5L / 1,32G Container	8434204049
Maximizer 32	5L / 1,32G Container	8434220002
Maximizer 46	5L / 1,32G Container	8434204045
Maximizer 68	5L / 1,32G Container	8434220001

Gauges

Model	Description	Ordering No.
090233-2	Gauge 70Mpa Back Mounted	8434 2124 07
090233-1	Gauge 700bar-10kpsi	8434 2051 59



Manifolds

Model	Description	Ordering No.
1-port	Co-Axial Panther Manifold Block	8434241130
4-port	Co-Axial Panther Manifold Block	8434241131
1-port	Co-Axial Retrofit Kit for SP-700	4222908591
1-port	Co-Axial Retrofit Adapter	4222905305



Couplers and fittings



Ordering No.	Description	Design/Shape	Where Used	Alternate Description
8434 2050 06	1/8" Coupler Female		RT-0,5, RT-01, TF-01, TFX/RTX-02	COUPLING, FEMALE SCREW-ON X 1/8"NPT (M)
8434 2123 41	1/4" Female Coupler		RT-03, RT-05, RT08, RT-10,RT-20, RT-25, RT-50, TF-03, TF-05, TF08, TF-10, TFX/RTX-04,TFX/RTX-08,TFX/RTX-14,TFX/RTX-18, TFX/RTX-30, PUMPS, HOSES.	COUPLING, FEMALE SCREW-ON X 1/4"NPT (M)
8434 2123 44	3/8" Female Coupler		RT-03, RT-05, RT08, RT-10,RT-20, RT-25, RT-50, TF-03, TF-05, TF08, TF-10, TFX/RTX-04,TFX/RTX-08,TFX/RTX-14,TFX/RTX-18, TFX/RTX-30, Pumps & Hoses	COUPLING, FEMALE SCREW-ON X 3/8"NPT (M)
8434 2123 65	1/8" Male Coupler		"RT-0,5, RT-01, TF-01, TFX/RTX-02"	COUPLING, MALE SCREW-ON X 1/8"NPT (M)
8434 2131 36	QCCOUPERS Quick Connect Coupler set		Can be used on all wrenches/pumps/hoses as an alternative to standard screw-on-couplings. Adaptors are also required (1/4"NPT or 1/8"NPT as appropriate)	COUPLER SET, QUICK CONNECT MALE & FEMALE
8434 2050 00	Nipple Male-Male 1/4IN-x1/4IN		Used with quick coupler set 8438 2131 36 & can be used with 8434 2123 38 as an alternative to 8434 2123 65	ADAPTOR, 1/4 NPT (M) X 1/4 NPT (M)
8434 2050 02	Nipple Male 1/4IN-x1/8IN		Used with quick coupler set 8438 2131 36 & can be used with 8434 2123 38 as an alternative to 8434 2123 65	ADAPTOR, 1/4 NPT (M) X 1/8 NPT (M)
8434 2050 04	Nipple NPT 1/4INx1/4IN		Used to connect in-line gauges & accessories	T-PIECE, 1/4 NPT (M) X 1/4 NPT (M) X 1/4 NPT (F)
8434 2123 38	1/4" Male Female Nipple		Used on pumps and hoses with 8434 2050 00. Can be used as alternative to 8434 2123 68 & 8434 2123 65 when used with appropriate adaptor	COUPLER, MALE SCREW-ON x 1/4 NPT (F)
8434 2123 68	M 1/4" Male Nipple		RT-03, RT-05, RT08, RT-10,RT-20, RT-25, RT-50, TF-03, TF-05, TF08, TF-10, TFX/RTX-04,TFX/RTX-08,TFX/RTX-14,TFX/RTX-18, TFX/RTX-30, Pumps & Hoses.	COUPLING, MALE SCREW-ON X 1/4"NPT (M)
4222901357	Coupling, Co-axial		Used on Pump Manifolds, supplied with O-rings	COUPLING, FEMALE CO-AXIAL x M30x1,5(M)
4222901403	Nipple, Co-axial		Used on Wrenches: TF & TFX Wrench types, Swivel Manifolds, supplied with O-rings	NIPPLE, MALE CO-AXIAL x M30x1,5(M)
4222905355	Hose Coupling, Co-axial		Used on Co-axial Hoses adapts from twin hose to co-axial coupling, supplied with threaded adaptors	HOSE COUPLING, FEMALE CO-AXIAL x G1/4 (M) x M14x1,5(M)
4222905356	Hose Nipple, Co-axial		Used on Co-axial Hoses adapts from twin hose to co-axial nipple, supplied with threaded adaptors	HOSE NIPPLE, MALE CO-AXIAL x G1/4 (M) x M14x1,5(M)